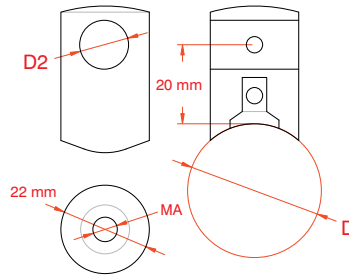


## Sostegni per barre / Bar holders / Bidas para varillas

COD.	D	D2	MA
19.001A.04S	33,7 mm	10 mm	6,5mm
19.002A.04S	33,7 mm	12 mm	6,5mm
19.003A.04S	33,7 mm	14 mm	6,5mm
19.004B.04S	42,4 mm	10 mm	6,5mm
19.005B.04S	42,4 mm	12 mm	6,5mm
19.006B.04S	42,4 mm	14 mm	6,5mm
19.007D.04S	48,3 mm	10 mm	6,5mm
19.008D.04S	48,3 mm	12 mm	6,5mm
19.009D.04S	48,3 mm	14 mm	6,5mm



19.012B.04S	42,4 mm	12 mm - foro non passante sinistro/ blind hole on left/ agujero izquierdo ciego	
19.013B.04S	42,4 mm	12 mm - foro non passante destro/ blind hole on right/ agujero derecho ciego	
19.004B.16S	42,4 mm	10 mm	6,5mm
19.005B.16S	42,4 mm	12 mm	6,5mm
19.012B.16S	42,4 mm	12 mm - foro non passante sinistro/ blind hole on left/ agujero izquierdo ciego	
19.013B.16S	42,4 mm	12 mm - foro non passante destro/ blind hole on right/ agujero derecho ciego	

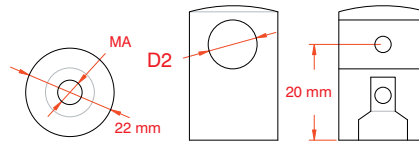
AISI 316

AISI 316

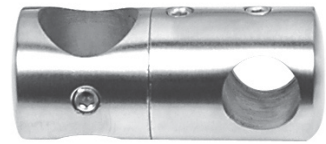
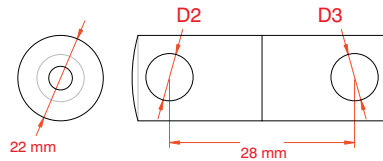


ZAMAK	D	D2	MA
19.004B.ZZS	42,4 mm	10 mm	6,5mm
19.005B.ZZS	42,4 mm	12 mm	6,5mm

COD.		D2	MA
19.020X.04S	piatto / flat / pletina	10 mm	6,5mm
19.021X.04S	piatto / flat / pletina	12 mm	6,5mm
19.022X.04S	piatto / flat / pletina	14 mm	6,5mm



COD.	D2	D3
19.030X.04S	10 mm	10 mm
19.031X.04S	12 mm	10 mm
19.032X.04S	12 mm	12 mm
19.033X.04S	14 mm	10 mm
19.034X.04S	14 mm	12 mm
19.035X.04S	14 mm	14 mm



COD.	X	D
------	---	---

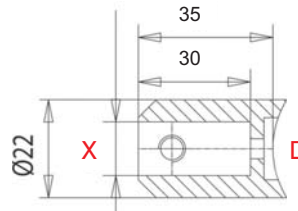
19.040X.04S 12 mm  
19.041X.04S 14 mm  
Per superfici piane / For flat surface / Para superficie plana

19.040A.04S 12 mm 33,7 mm  
19.041A.04S 14 mm 33,7 mm  
Per tubo / For tube / Para tubo

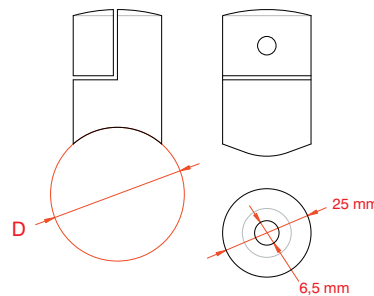
19.040B.04S 12 mm 42,4 mm  
19.041B.04S 14 mm 42,4 mm  
Per tubo / For tube / Para tubo

19.040B.16S 12 mm 42,4 mm  
19.041B.16S 14 mm 42,4 mm  
Per tubo / For tube / Para tubo

AISI 316



COD.	D	T
19.050X.04S	piatto / flat / pletina	1,5 - 4 mm
19.050A.04S	33,7 mm	1,5 - 4 mm
19.050B.04S	42,4 mm	1,5 - 4 mm
19.050D.04S	48,3 mm	1,5 - 4 mm



T  
1,5 - 4 mm

COD.	X	D
------	---	---

19.060A.04S 33,7 mm 12 mm  
19.061A.04S 33,7 mm 14 mm  
19.060B.04S 42,4 mm 12 mm  
19.061B.04S 42,4 mm 14 mm

19.060B.16S 42,4 mm 12 mm  
19.061B.16S 42,4 mm 14 mm

AISI 316

regolabile / adjustable / ajustable

